

CONDOMINIUM

THE CONDOS AT QUIET MEADOWS



Welcome to Quiet Meadows.

Discover the perfect blend of comfort and convenience.

Our multi-family condominiums offer two thoughtfully designed floor plans, featuring 2-3 bedroom options, 2 baths, and an attached 2 car garage. Each condominium is designed for modern living, featuring a master bedroom with an ensuite for added privacy and a generous walk-in closet for ample storage. Enjoy easy access to your patio or deck to enjoy the outdoors!



SF

1st Floor – 1,259 SF

2nd Floor – 1,560 SF



2-3 Bedrooms



2 Baths



2 Car Garage

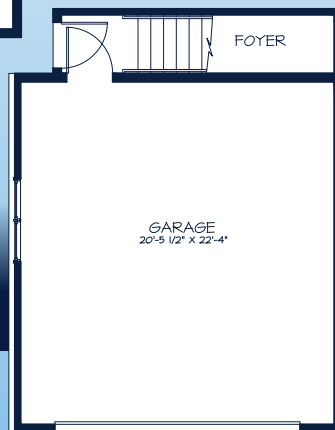
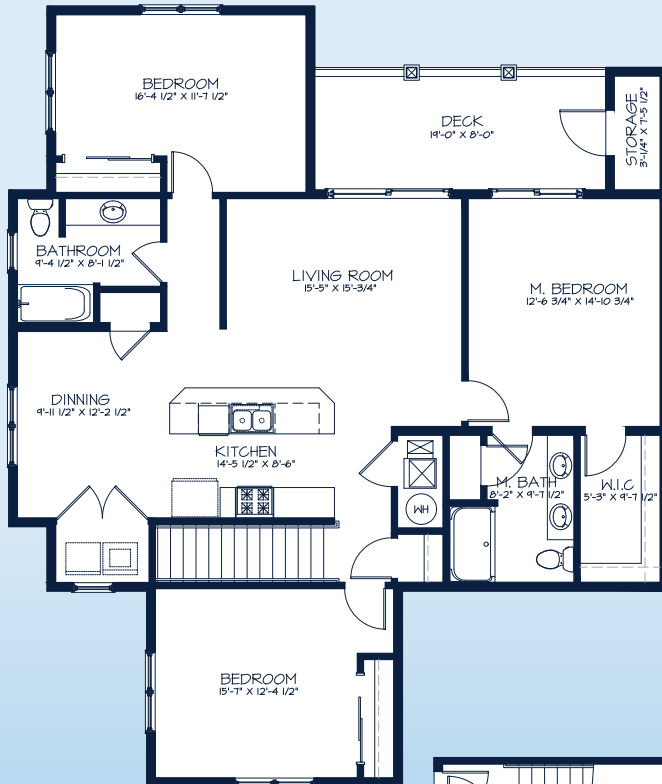
Call **262-725-1445** or email **sales@steppingstonehomes.net** SteppingStoneHomes.net



MILWAUKEE'S
Premier Home Builder

THE CONDOS AT QUIET MEADOWS

2-3 Bedrooms 2 Bathrooms 2 Car Garage



FIRST & SECOND FLOOR LAYOUTS

SteppingStoneHomes.net

Stepping Stone Homes • 19435 W Capitol Dr, Suite 102 • Brookfield, WI 53045

© Copyright 2025 Stepping Stone Homes Inc. All Rights Reserved. Renderings are artist's conception only. Floor plan dimensions are approximate and may vary per elevation. Specifications, landscaping, features, options and pricing are subject to change without notice. Features shown may not be standard in plan, and are available at an additional cost. Some optional features may or may not be shown.

