

THE MADISON

SF

1,580 SF



3 Bedrooms



2 Baths



2 Car Garage

The Madison is a quaint split ranch with an open concept design. The open floorplan throughout the kitchen, dinette and great room makes a perfect space for entertaining. The Owner's Suite sits in the back of the home with windows overlooking the backyard, complete with a walk-in closet and Owner's Bath. This home also features a second full bathroom in the front of the house conveniently located between the additional two bedrooms.



ELEVATION A



ELEVATION B

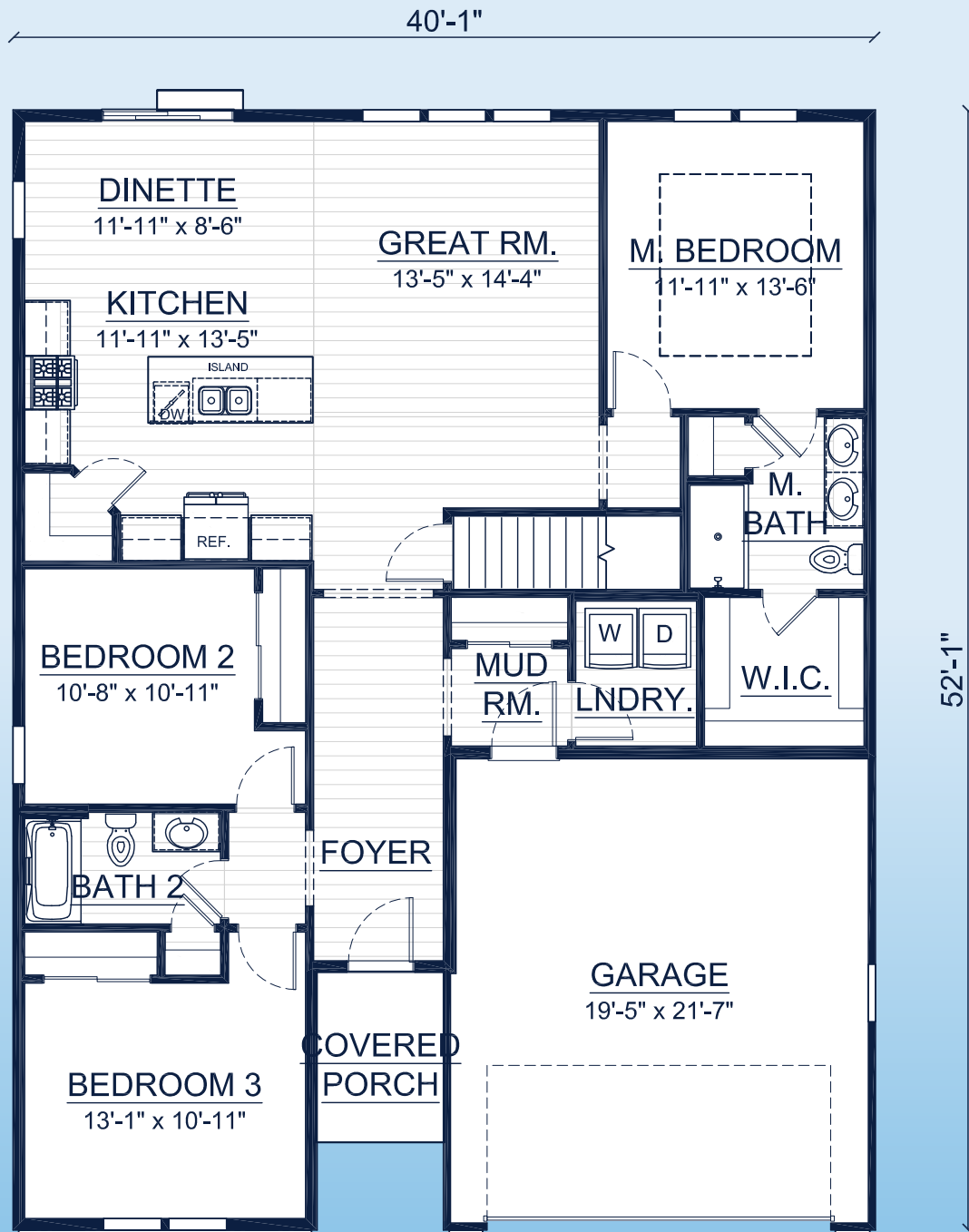
Call **262-725-1445** or email **sales@steppingstonehomes.net** SteppingStoneHomes.net



MILWAUKEE'S
Premier Home Builder

THE MADISON

SF 1,580 SF 3 Bedrooms 2 Bathrooms 2 Car Garage



FIRST FLOOR LAYOUT

SteppingStoneHomes.net

Stepping Stone Homes • 19435 W Capitol Dr, Suite 102 • Brookfield, WI 53045

© Copyright 2025 Stepping Stone Homes Inc. All Rights Reserved. Renderings are artist's conception only. Floor plan dimensions are approximate and may vary per elevation. Specifications, landscaping, features, options and pricing are subject to change without notice. Features shown may not be standard in plan, and are available at an additional cost. Some optional features may or may not be shown.

