

# THE BERKSHIRE

SF

2,721 SF



4 Bedrooms



2.5 Baths



2 Car Garage



The Berkshire is a large home complete with four bedrooms, two and a half bathrooms, and an additional flex room. The Berkshire model greets visitors in a foyer space that leads into the shared great room, kitchen with island and corner pantry, and dinette area. Upstairs sits the four bedrooms and convenient laundry room. The Owner's Suite is complete with a large walk-in closet and private bath.



ELEVATION B



ELEVATION C

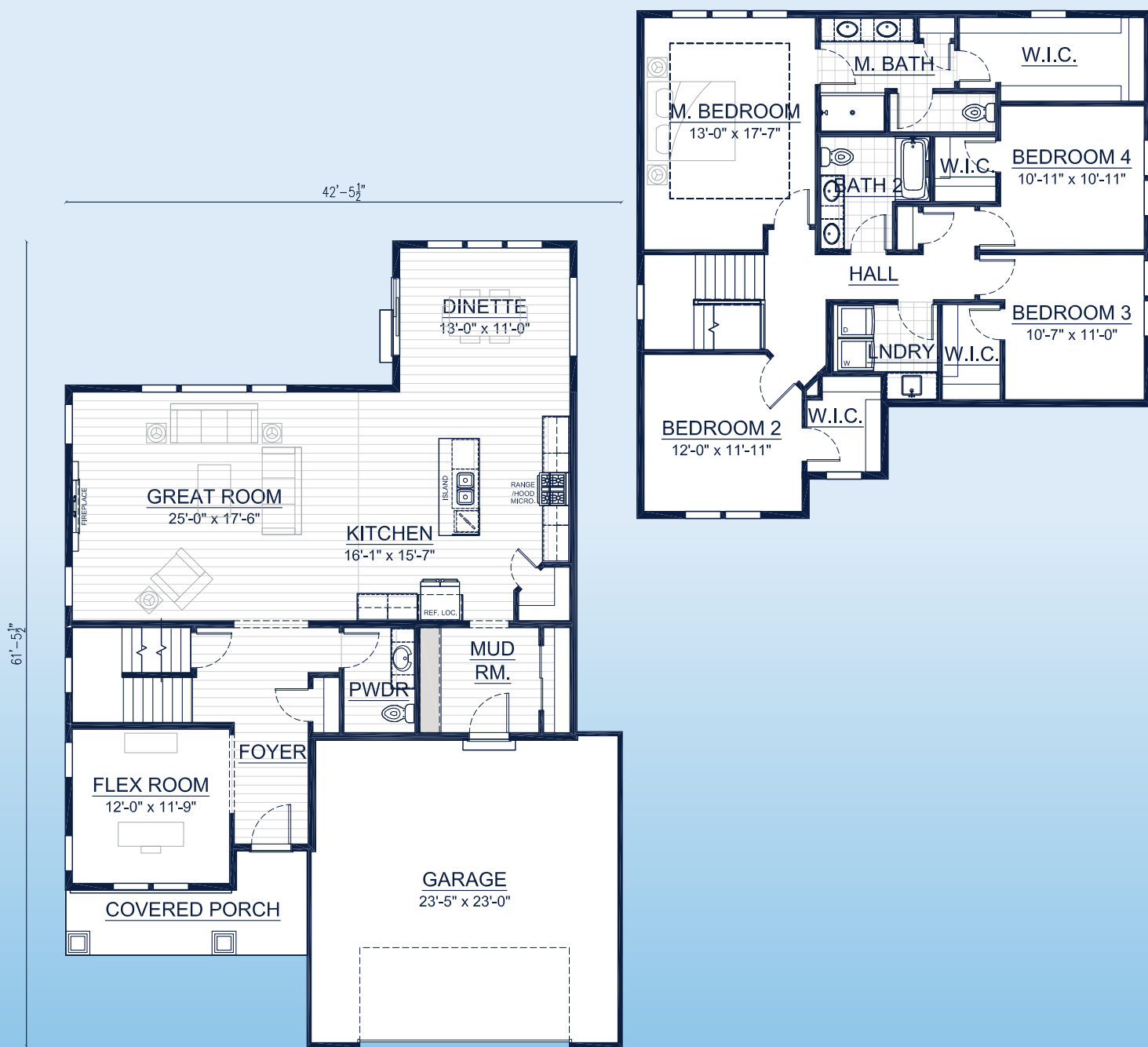
Call **262-725-1445** or email **[sales@steppingstonehomes.net](mailto:sales@steppingstonehomes.net)** [SteppingStoneHomes.net](http://SteppingStoneHomes.net)



**MILWAUKEE'S**  
Premier Home Builder

# THE BERKSHIRE

SF 2,721 SF 4 Bedrooms 2.5 Bathrooms 2 Car Garage



## FIRST & SECOND FLOOR LAYOUT

SteppingStoneHomes.net

Stepping Stone Homes • 19435 W Capitol Dr, Suite 102 • Brookfield, WI 53045

© Copyright 2025 Stepping Stone Homes Inc. All Rights Reserved. Renderings are artist's conception only. Floor plan dimensions are approximate and may vary per elevation. Specifications, landscaping, features, options and pricing are subject to change without notice. Features shown may not be standard in plan, and are available at an additional cost. Some optional features may or may not be shown.

