

# THE JUNIPER



**Welcome to The Juniper.** These side-by-side single-family homes offer 2 bedrooms, 2 bathrooms, and an attached 2 car garage, crafted for comfort and convenience.

Discover easy living in a thoughtfully designed ranch-style twin home in the desirable Summit at Bain Station community. Nestled in a quiet neighborhood, these homes provide the ideal lifestyle of a single-family home with none of the hassle. Experience the best of single-family living in a welcoming community designed with your needs in mind!



SF

1,613 SF



2 Bedrooms



2 Baths



2 Car Garage

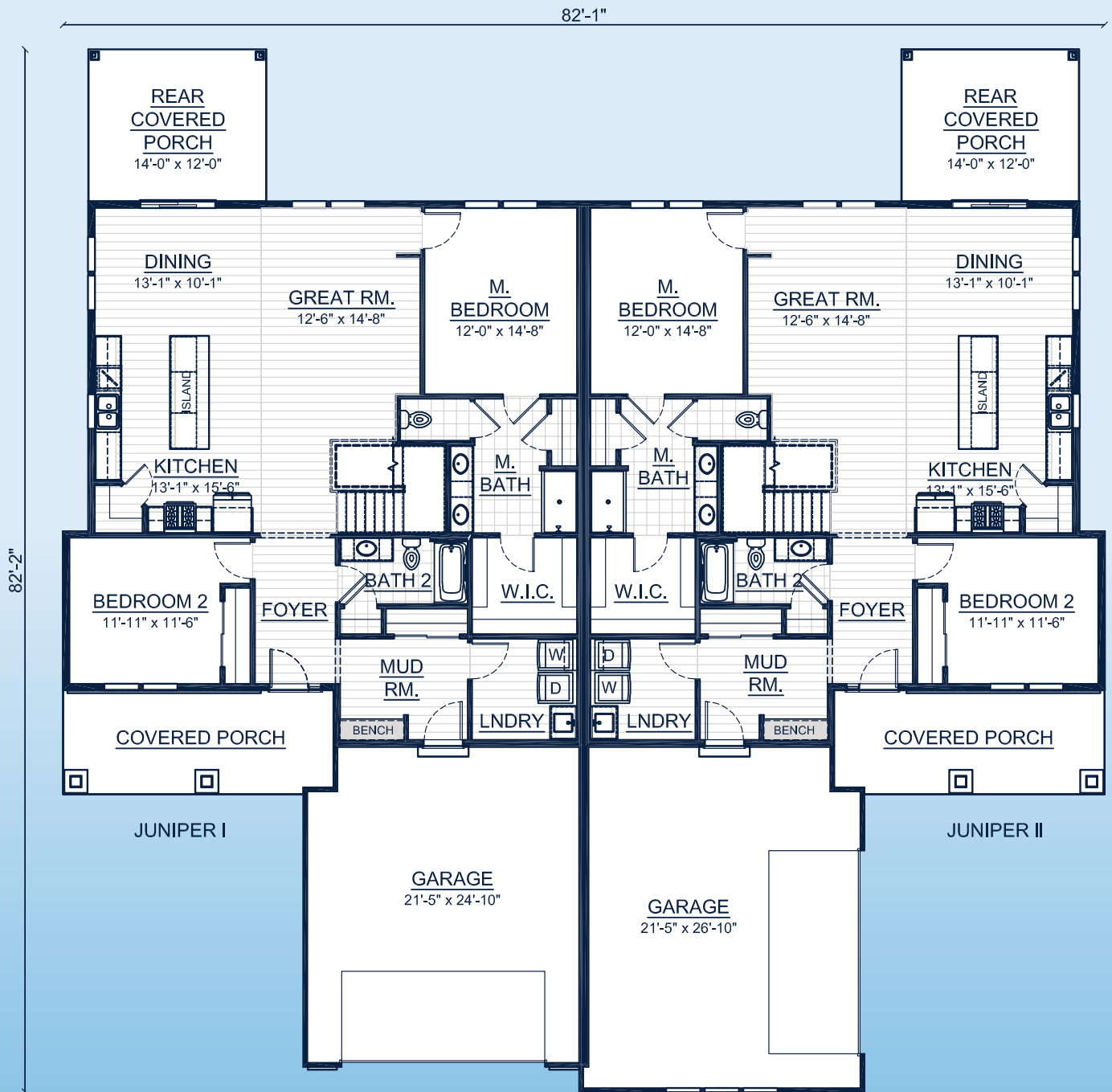
Call **262-725-1445** or email **[sales@steppingstonehomes.net](mailto:sales@steppingstonehomes.net)** [SteppingStoneHomes.net](http://SteppingStoneHomes.net)



**MILWAUKEE'S**  
Premier Home Builder

# THE JUNIPER

SF 1,613 SF 2 Bedrooms 2 Bathrooms 2 Car Garage



## FIRST FLOOR LAYOUT

SteppingStoneHomes.net

Stepping Stone Homes • 19435 W Capitol Dr, Suite 102 • Brookfield, WI 53045

© Copyright 2025 Stepping Stone Homes Inc. All Rights Reserved. Renderings are artist's conception only. Floor plan dimensions are approximate and may vary per elevation. Specifications, landscaping, features, options and pricing are subject to change without notice. Features shown may not be standard in plan, and are available at an additional cost. Some optional features may or may not be shown.

