

# THE VILLAS AT MORNING MEADOWS



**The Pine** – 742 SF, 1 Bed/1 Bath

**The Cypress** – 905 SF, 2 Bed/1 Bath

**The Linden** – 1,085 SF, 2 Bed/2 Bath

**The Birch** – 1,317 SF, 3 Bed/2 Bath

Welcome to The Villas at Morning Meadows in Jackson, WI. These side-by-side single family homes come with four floor plans to choose from. These homes offer the perfect balance of cozy living and are thoughtfully designed to maximize space and comfort without sacrificing style. Plus, benefit from the universal design features that make accessibility a dream for the active adult including a walking path and dog park. This community offers 3, 2 or 1 bedroom options and are designed for those looking for just the right-size home.



BUILDING I - LINDEN/LINDEN FARMHOUSE



BUILDING II - BIRCH/BIRCH FARMHOUSE



BUILDING III - PINE/CYPRESS FARMHOUSE



BUILDING IV - BIRCH/LINDEN FARMHOUSE

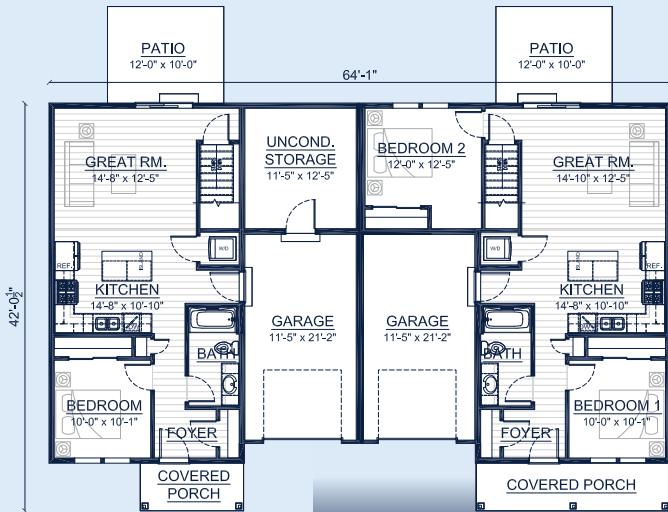
Call **262-725-1445** or email **[sales@steppingstonehomes.net](mailto:sales@steppingstonehomes.net)** [SteppingStoneHomes.net](http://SteppingStoneHomes.net)



**MILWAUKEE'S**  
Premier Home Builder

# THE VILLAS AT MORNING MEADOWS

1-3 Bedrooms 1-2 Bathrooms 1 Car Garage



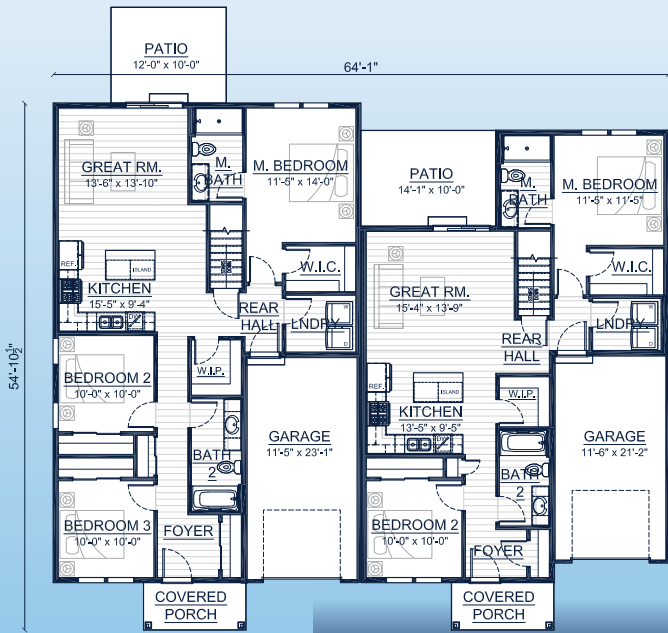
THE PINE / CYPRESS

SF 1,646 SF



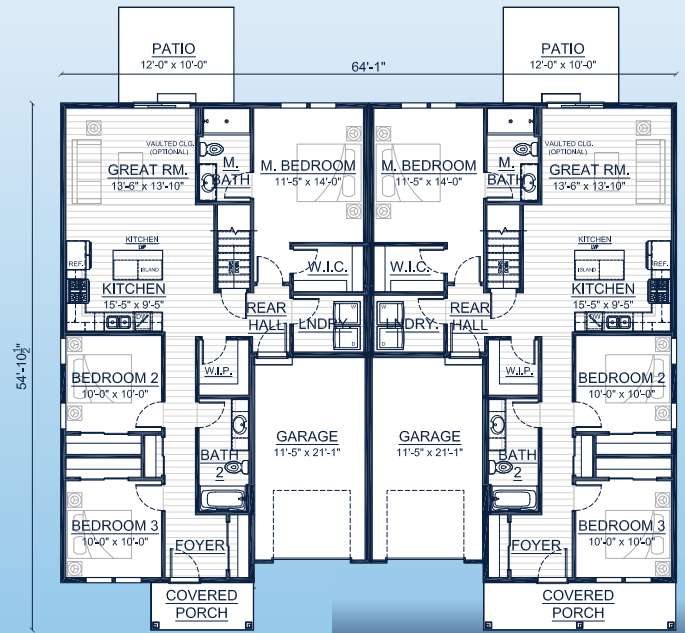
THE LINDEN / LINDEN

SF 2,168 SF



THE BIRCH / LINDEN

SF 2,400 SF



THE BIRCH / BIRCH

SF 2,635 SF

## FIRST FLOOR LAYOUTS

SteppingStoneHomes.net

Stepping Stone Homes • 19435 W Capitol Dr, Suite 102 • Brookfield, WI 53045

© Copyright 2025 Stepping Stone Homes Inc. All Rights Reserved. Renderings are artist's conception only. Floor plan dimensions are approximate and may vary per elevation. Specifications, landscaping, features, options and pricing are subject to change without notice. Features shown may not be standard in plan, and are available at an additional cost. Some optional features may or may not be shown.

