

THE RILEY

SF

2,232 SF



3 Bedrooms



2.5 Baths



2 Car Garage

This One and a half story is a great way to get the best of both a single and two-story home. It offers an Owner's Suite and main living area on the ground floor while providing some extra space and separation with partial upstairs. The vaulted ceiling in the great room makes this space grand. The open dinette and kitchen span across the back of the home. You will also find a powder room and laundry room on the main level. Upstairs, The Riley offers an open loft with two additional bedrooms and a bath making this home perfect for everyday living!



FARMHOUSE



TRADITIONAL

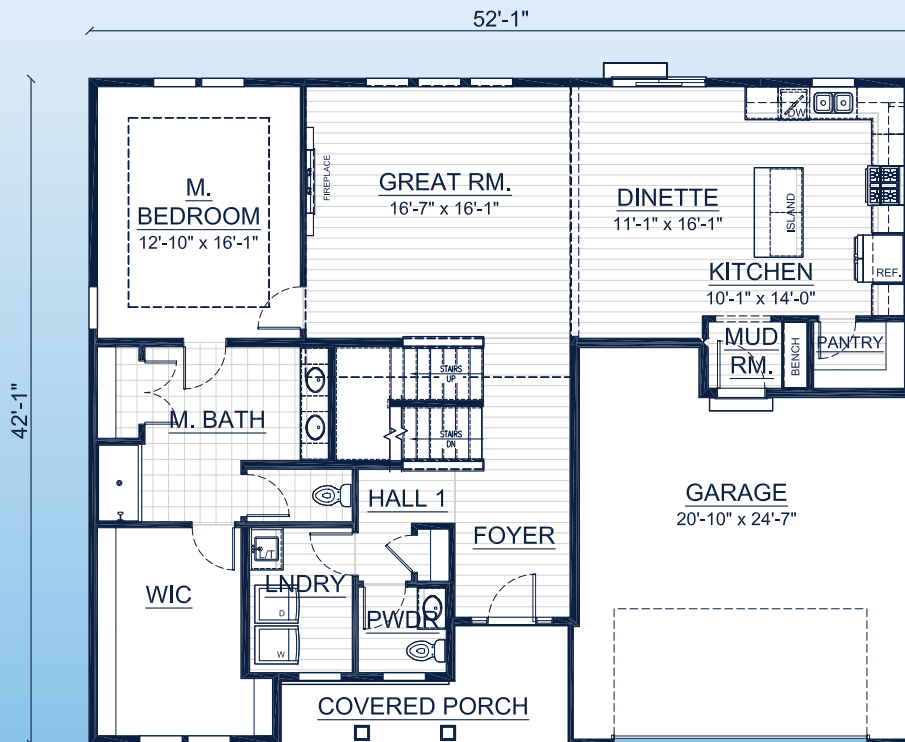
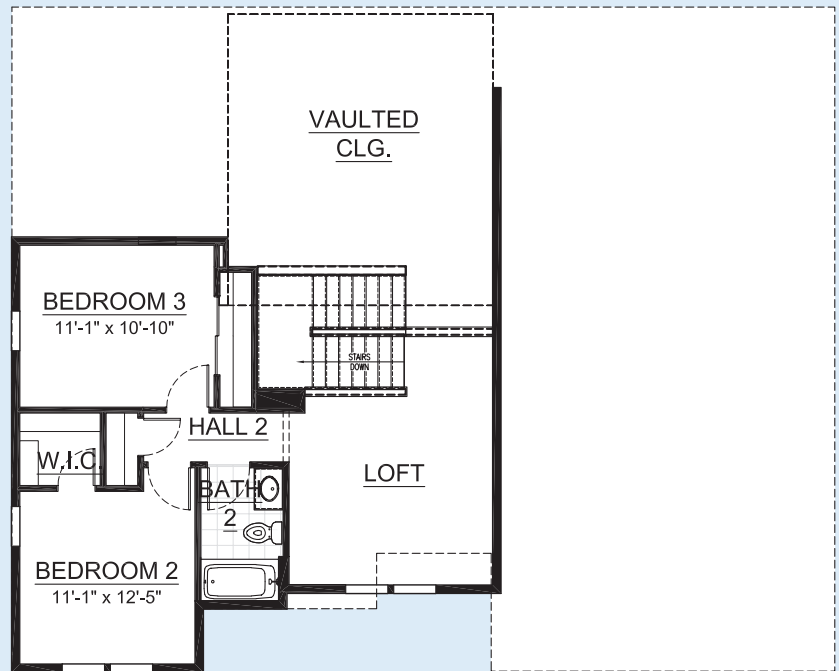
Call **262-725-1445** or email **sales@steppingstonehomes.net** SteppingStoneHomes.net



MILWAUKEE'S
Premier Home Builder

THE RILEY

SF 2,232 SF 3 Bedrooms 2.5 Bathrooms 2 Car Garage



FIRST & SECOND FLOOR LAYOUT

SteppingStoneHomes.net

Stepping Stone Homes • 19435 W Capitol Dr, Suite 102 • Brookfield, WI 53045

© Copyright 2025 Stepping Stone Homes Inc. All Rights Reserved. Renderings are artist's conception only. Floor plan dimensions are approximate and may vary per elevation. Specifications, landscaping, features, options and pricing are subject to change without notice. Features shown may not be standard in plan, and are available at an additional cost. Some optional features may or may not be shown.

