

# THE CONDOS AT QUIET MEADOWS



## Welcome to Quiet Meadows.

Discover the perfect blend of comfort and convenience.

Our multi-family condominiums offer two thoughtfully designed floor plans, featuring 2-3 bedroom options, 2 baths, and an attached 2 car garage. Each condominium is designed for modern living, featuring a master bedroom with an ensuite for added privacy and a generous walk-in closet for ample storage. Enjoy easy access to your patio or deck to enjoy the outdoors!



SF

**1st Floor** – 1,665 SF

**2nd Floor** – 1,894 SF



2-3 Bedrooms



2 Baths



2 Car Garage

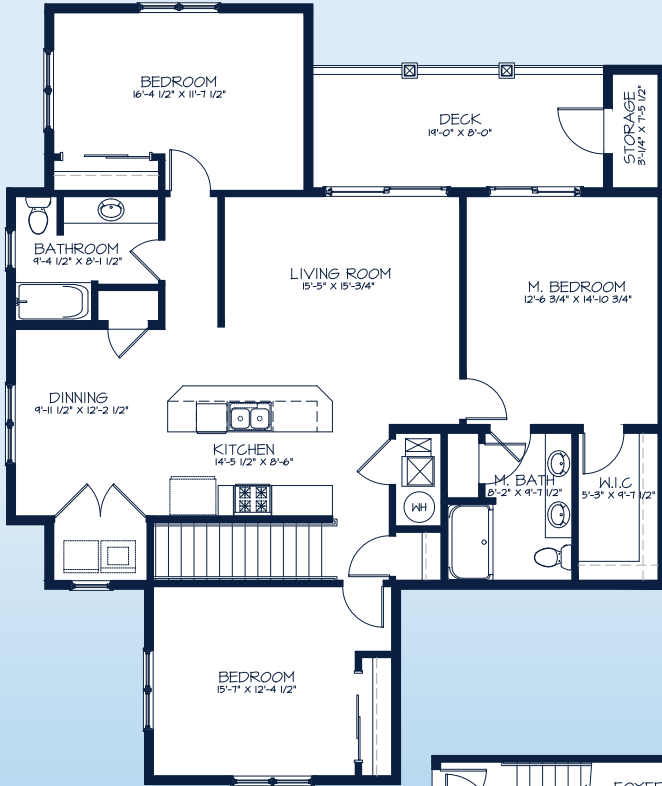
Call **262-725-1445** or email [sales@steppingstonehomes.net](mailto:sales@steppingstonehomes.net) [SteppingStoneHomes.net](http://SteppingStoneHomes.net)



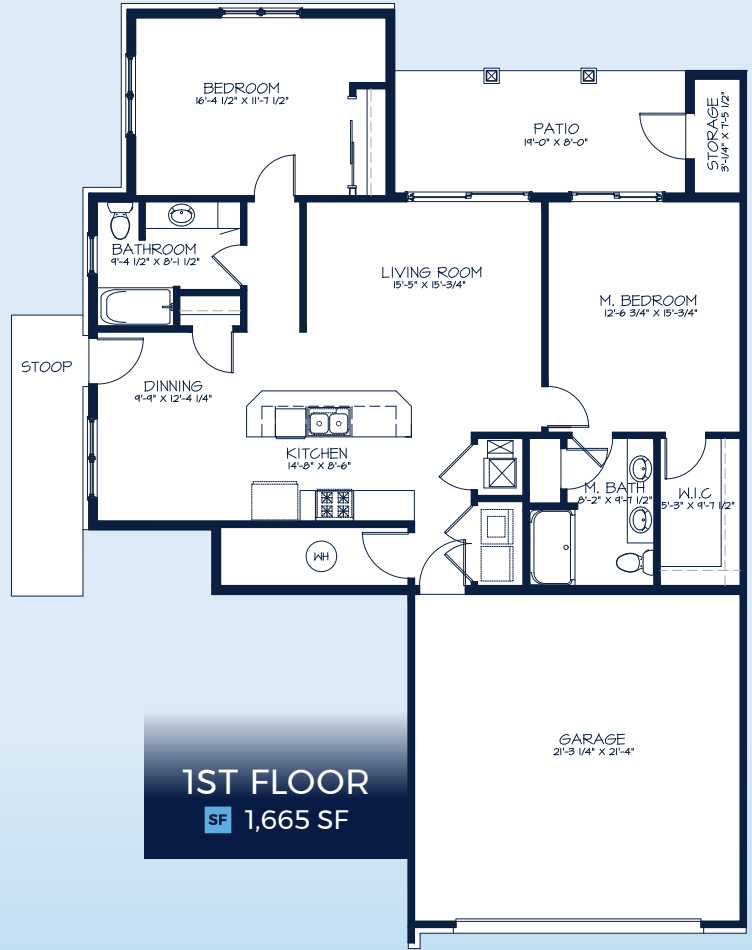
**MILWAUKEE'S**  
Premier Home Builder

# THE CONDOS AT QUIET MEADOWS

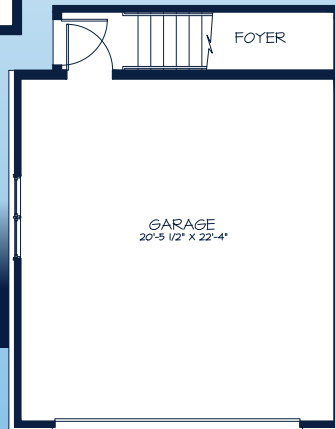
2-3 Bedrooms 2 Bathrooms 2 Car Garage



**2ND FLOOR**  
SF 1,894 SF



**1ST FLOOR**  
SF 1,665 SF



## FIRST & SECOND FLOOR LAYOUTS

SteppingStoneHomes.net

Stepping Stone Homes • 19435 W Capitol Dr, Suite 102 • Brookfield, WI 53045

© Copyright 2025 Stepping Stone Homes Inc. All Rights Reserved. Renderings are artist's conception only. Floor plan dimensions are approximate and may vary per elevation. Specifications, landscaping, features, options and pricing are subject to change without notice. Features shown may not be standard in plan, and are available at an additional cost. Some optional features may or may not be shown.

