

THE VILLAS AT MORNING MEADOWS



The Pine - 742 SF, 1 Bed/1 Bath

The Cypress - 905 SF, 2 Bed/1 Bath

The Linden - 1,085 SF, 2 Bed/2 Bath

The Birch - 1,317 SF, 3 Bed/2 Bath

Welcome to The Villas at Morning Meadows in Jackson, WI. Enjoy affordable condominium life without the worry of lawn maintenance or snow removal. Plus, benefit from the universal design features that make accessibility a dream for the active adult, including a walking path and dog park. This community features 30 privately located ranch duplex condominiums that offer 3, 2 or 1 bedroom options and are designed for those looking for just the right-size home.



BUILDING I - LINDEN/LINDEN FARMHOUSE



BUILDING II - BIRCH/BIRCH FARMHOUSE



BUILDING III - PINE/CYPRESS FARMHOUSE



BUILDING IV - BIRCH/LINDEN FARMHOUSE

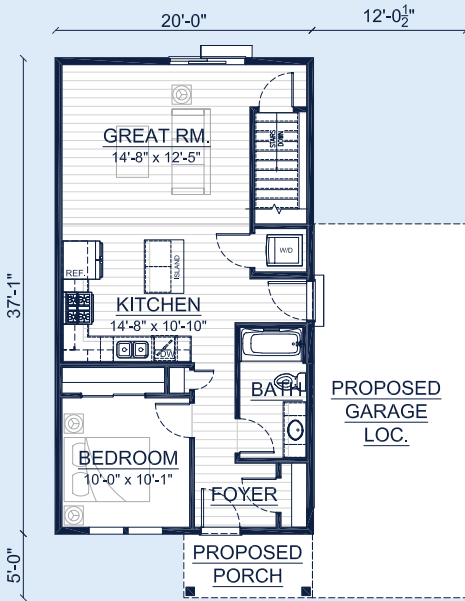
Call **262-725-1445** or email sales@steppingstonehomes.net SteppingStoneHomes.net



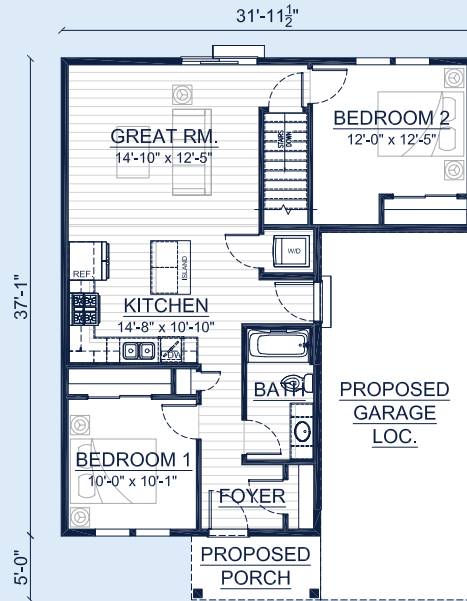
MILWAUKEE'S
Premier Home Builder

THE VILLAS AT MORNING MEADOWS

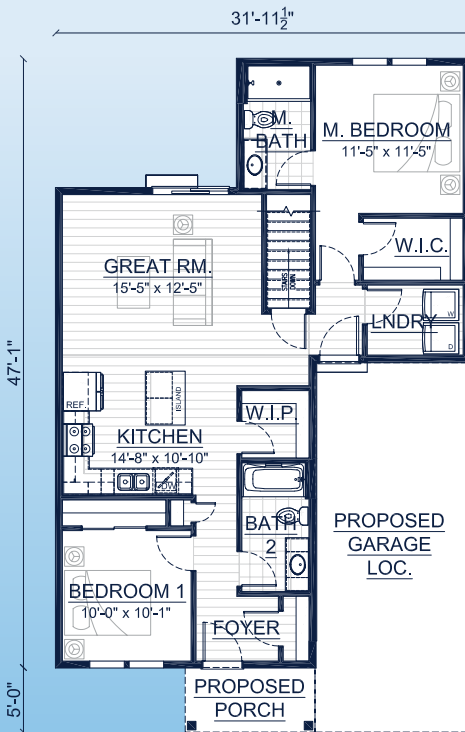
1-3 Bedrooms 1-2 Bathrooms 1 Car Garage



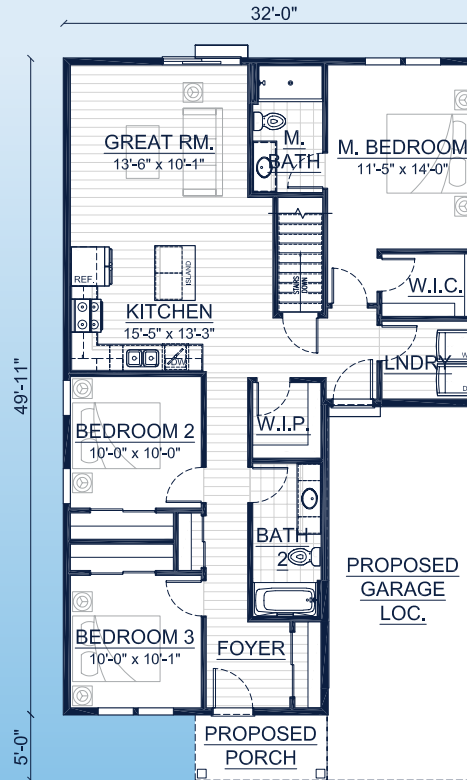
THE PINE
SF 742 SF



THE CYPRESS
SF 905 SF



THE LINDEN
SF 1,085 SF



THE BIRCH
SF 1,317 SF

FIRST FLOOR LAYOUTS

SteppingStoneHomes.net

Stepping Stone Homes • 19435 W Capitol Dr, Suite 102 • Brookfield, WI 53045

© Copyright 2023 Stepping Stone Homes Inc. All Rights Reserved. Renderings are artist's conception only. Floor plan dimensions are approximate and may vary per elevation. Specifications, landscaping, features, options and pricing are subject to change without notice. Features shown may not be standard in plan, and are available at an additional cost. Some optional features may or may not be shown.

