

ELEVATION C

THE HUDSON

SF

2,072 SF



3 Bedrooms



2.5 Baths



2 Car Garage



The Hudson is a spacious two-story home with open concept living on the first floor including a kitchen with walk-in pantry, dinette, and great room space. Also located on the first floor is a convenient powder room. The second floor features an Owner's Suite with two walk-in closets and a private bathroom. The secondary story also has two large bedrooms with a full bathroom and laundry room.



ELEVATION A



ELEVATION B

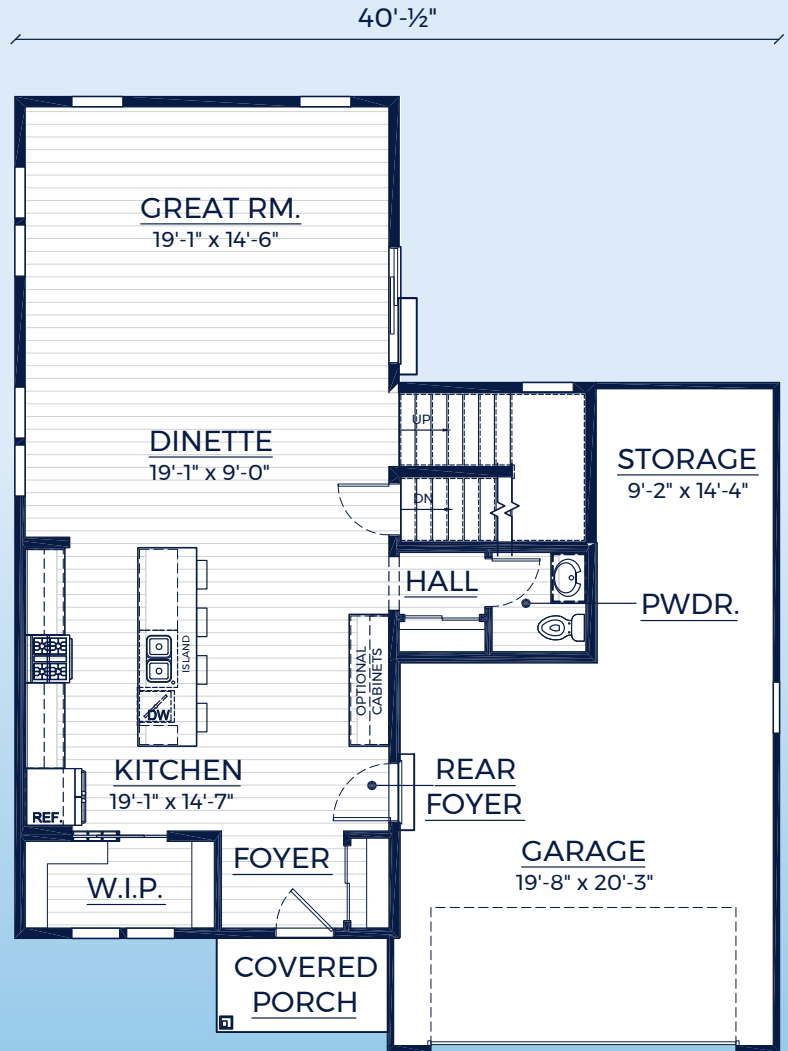
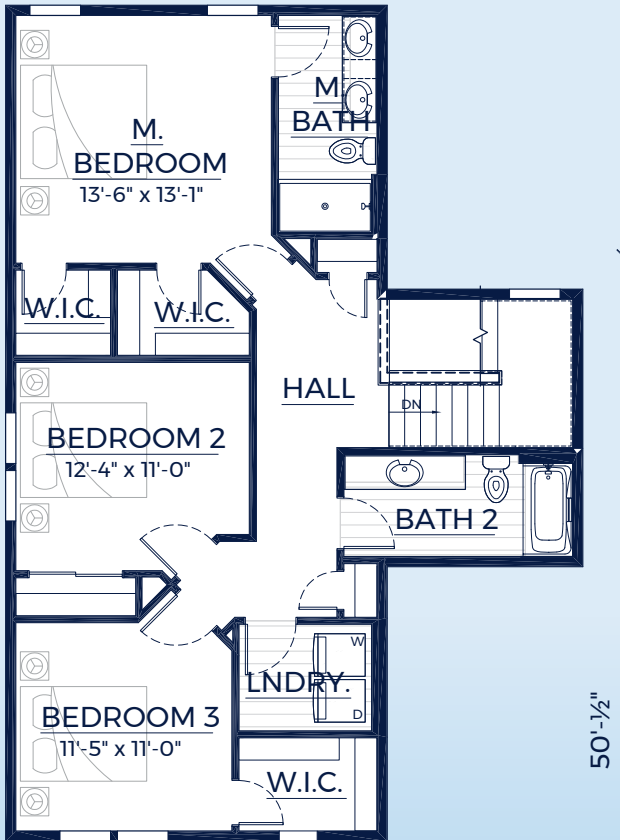
Call **262-725-1445** or email sales@steppingstonehomes.net SteppingStoneHomes.net



MILWAUKEE'S
Premier Home Builder

THE HUDSON

SF 2,072 SF 3 Bedrooms 2.5 Bathrooms 2 Car Garage



FIRST & SECOND FLOOR LAYOUT

SteppingStoneHomes.net

Stepping Stone Homes • 19435 W Capitol Dr, Suite 102 • Brookfield, WI 53045

© Copyright 2024 Stepping Stone Homes Inc. All Rights Reserved. Renderings are artist's conception only. Floor plan dimensions are approximate and may vary per elevation. Specifications, landscaping, features, options and pricing are subject to change without notice. Features shown may not be standard in plan, and are available at an additional cost. Some optional features may or may not be shown.

