

TRADITIONAL

THE OLIVIA

SF

2,022 SF



3 Bedrooms



2.5 Baths



2 Car Garage



The Olivia is a fantastic design with a lot of living space. Upon entering the home, the spacious great room greets you. As you continue, the kitchen is complete with an island, quartz countertops, maple cabinetry, and a corner pantry. Everyday access through the mud room off the garage makes life a breeze with a built-in bench and large storage closet. A second-floor Owner's Suite features a large walk-in closet and a separate bath with a 5-ft. shower. There are two additional bedrooms, a main bath, and a laundry room that round out the second floor.



FARMHOUSE



CRAFTSMAN

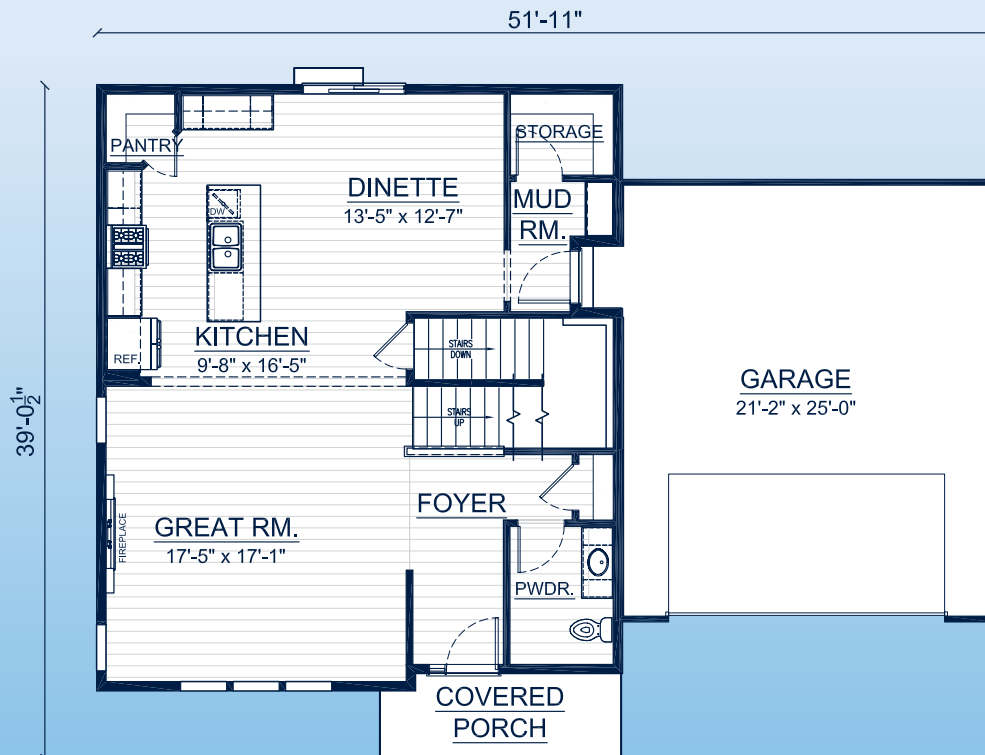
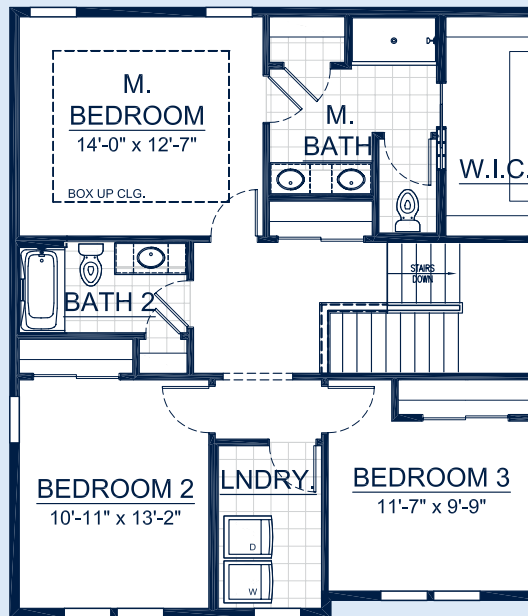
Call **262-725-1445** or email **sales@steppingstonehomes.net** SteppingStoneHomes.net



MILWAUKEE'S
Premier Home Builder

THE OLIVIA

SF 2,022 SF 3 Bedrooms 2.5 Bathrooms 2 Car Garage



FIRST & SECOND FLOOR LAYOUT

SteppingStoneHomes.net

Stepping Stone Homes • 19435 W Capitol Dr, Suite 102 • Brookfield, WI 53045

© Copyright 2023 Stepping Stone Homes Inc. All Rights Reserved. Renderings are artist's conception only. Floor plan dimensions are approximate and may vary per elevation. Specifications, landscaping, features, options and pricing are subject to change without notice. Features shown may not be standard in plan, and are available at an additional cost. Some optional features may or may not be shown.

