

THE NEENAH

SF

1,692 SF



4 Bedrooms



2 Baths



2 Car Garage

The Neenah is the perfect split-bedroom ranch with 4 bedrooms! The owner's suite is in the back of the home and features an ensuite and a walk-in closet. The other three bedrooms are at the front with a full bathroom between them. The great room, dinette, and kitchen are connected and offer great sightlines. The kitchen includes a center island with a sink and a corner pantry. The mud room and laundry room can be found directly off the garage for added convenience



ELEVATION A



ELEVATION B

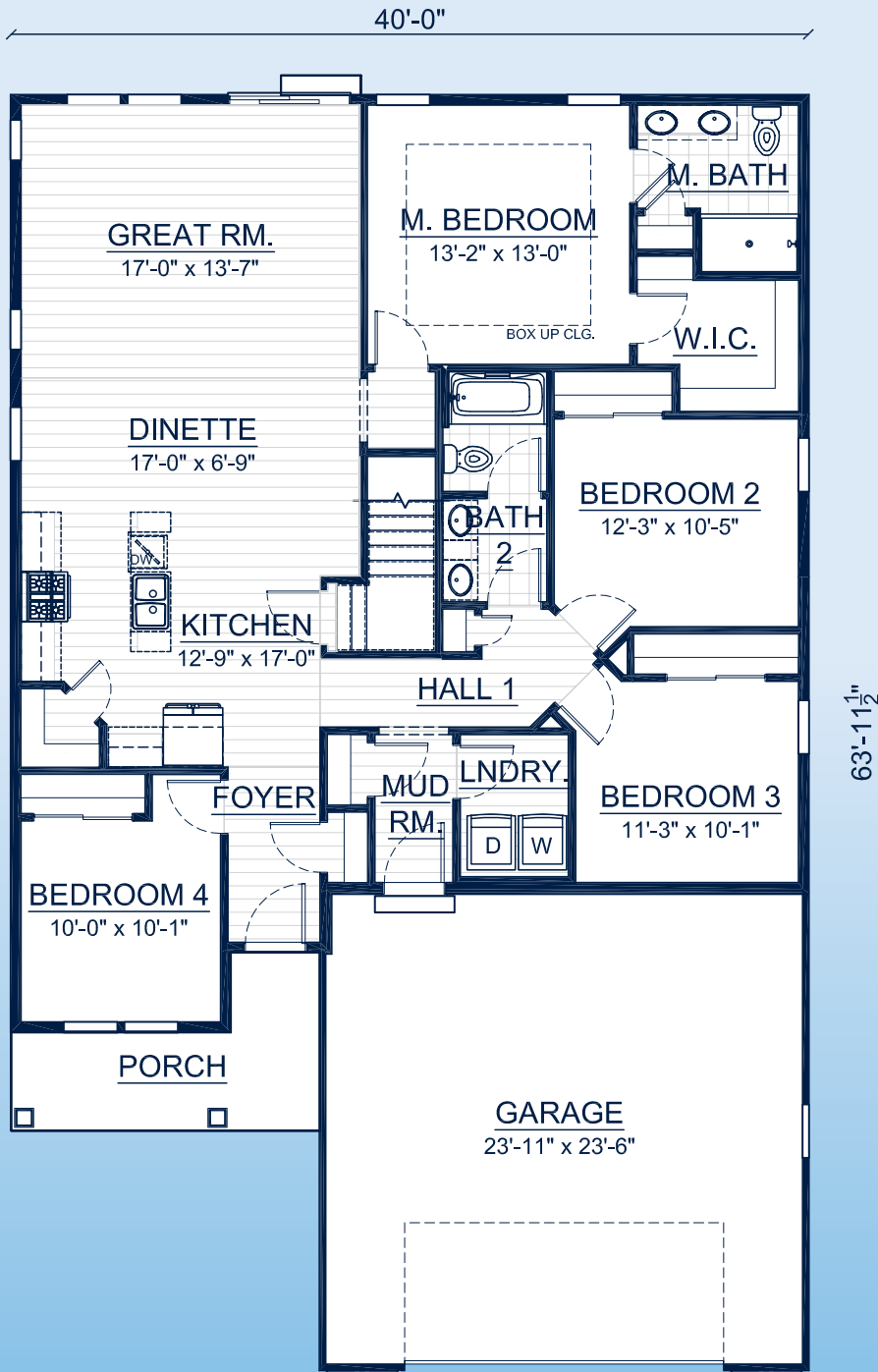
Call **262-725-1445** or email **sales@steppingstonehomes.net** SteppingStoneHomes.net



MILWAUKEE'S
Premier Home Builder

THE NEENAH

SF 1,692 SF 4 Bedrooms 2 Bathrooms 2 Car Garage



FIRST FLOOR LAYOUT

SteppingStoneHomes.net

Stepping Stone Homes • 19435 W Capitol Dr, Suite 102 • Brookfield, WI 53045

© Copyright 2023 Stepping Stone Homes Inc. All Rights Reserved. Renderings are artist's conception only. Floor plan dimensions are approximate and may vary per elevation. Specifications, landscaping, features, options and pricing are subject to change without notice. Features shown may not be standard in plan, and are available at an additional cost. Some optional features may or may not be shown.

