

THE MONONA

SF

2,268 SF



3 Bedrooms



2.5 Baths



2 Car Garage



The Monona features 2,268 SF of living space. The main living area is open, connecting the kitchen, dinette, and great room. The Owner's Suite is tucked away and offers a large bathroom and walk in closet. Down the hall are two additional bedrooms and a bathroom. The mud room off the garage is spacious with an additional closet and boot bench, perfect for staying organized. There is also a powder room and large laundry room with plenty of cabinets and counter space.



ELEVATION A



ELEVATION B

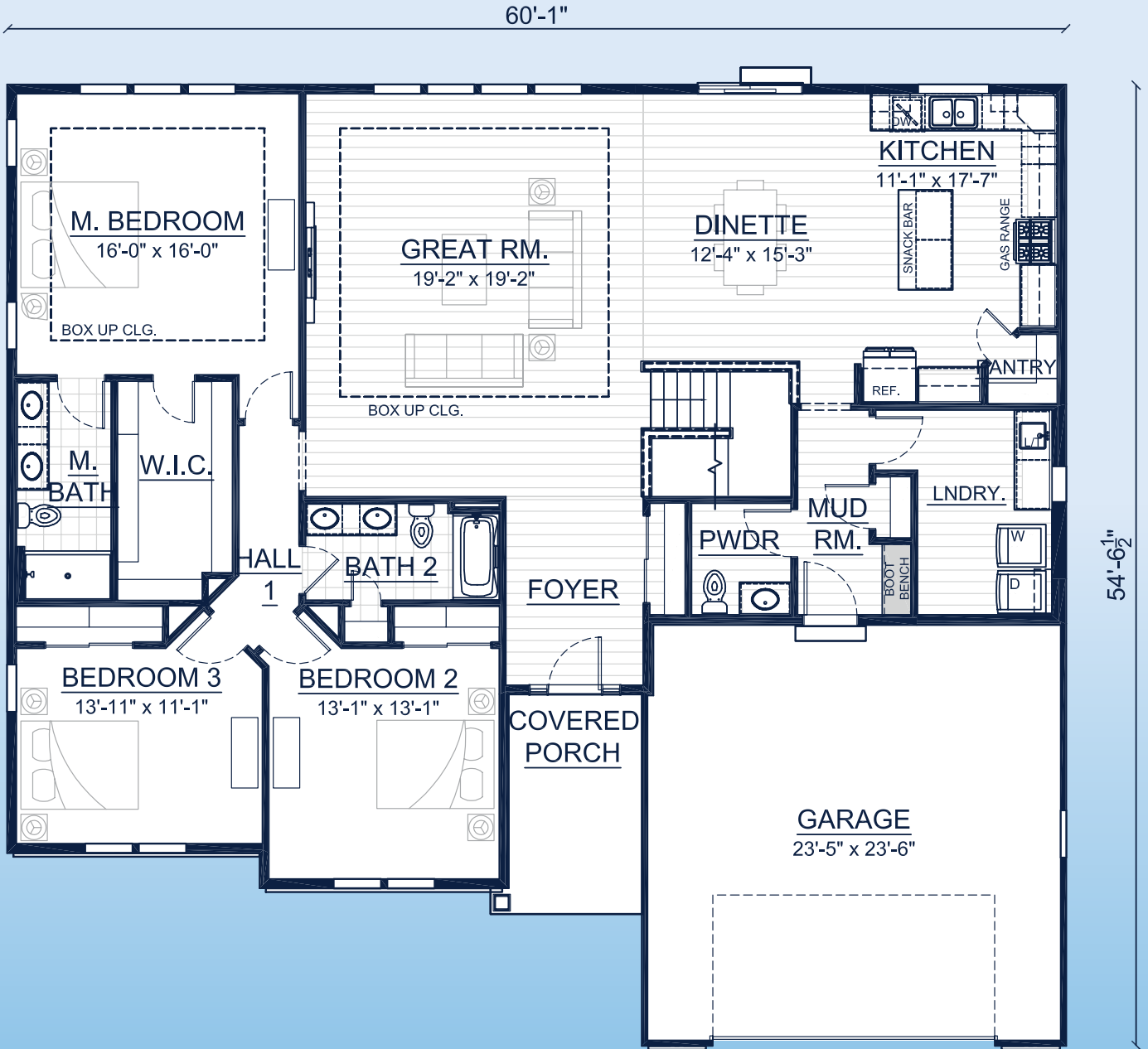
Call **262-725-1445** or email **sales@steppingstonehomes.net** SteppingStoneHomes.net



MILWAUKEE'S
Premier Home Builder

THE MONONA

SF 2,268 SF 3 Bedrooms 2.5 Bathrooms 2 Car Garage



FIRST FLOOR LAYOUT

SteppingStoneHomes.net

Stepping Stone Homes • 19435 W Capitol Dr, Suite 102 • Brookfield, WI 53045

© Copyright 2023 Stepping Stone Homes Inc. All Rights Reserved. Renderings are artist's conception only. Floor plan dimensions are approximate and may vary per elevation. Specifications, landscaping, features, options and pricing are subject to change without notice. Features shown may not be standard in plan, and are available at an additional cost. Some optional features may or may not be shown.

