

# THE JUNIPER



**Welcome to The Juniper.** These side-by-side 2 bedroom, 2 bathroom, 2 car garage side-by-side condominiums include all the comforts you want and more.

Designed for carefree living, each expertly designed floor plan features an electric fireplace in the great room, an open kitchen and dinette with stainless steel appliance package, quartz countertops and soft close doors. Every condo also includes its own private outdoor space and a two-car garage. We equip our homes with Smart Technology. You will find quality craftsmanship throughout such as 2x6 construction exterior walls, solid core doors, and active radon system. For those looking for added space, all the condos have a full basement which includes an egress window and is plumbed for a bath.



SF

1,613 SF



2 Bedrooms



2 Baths



2 Car Garage

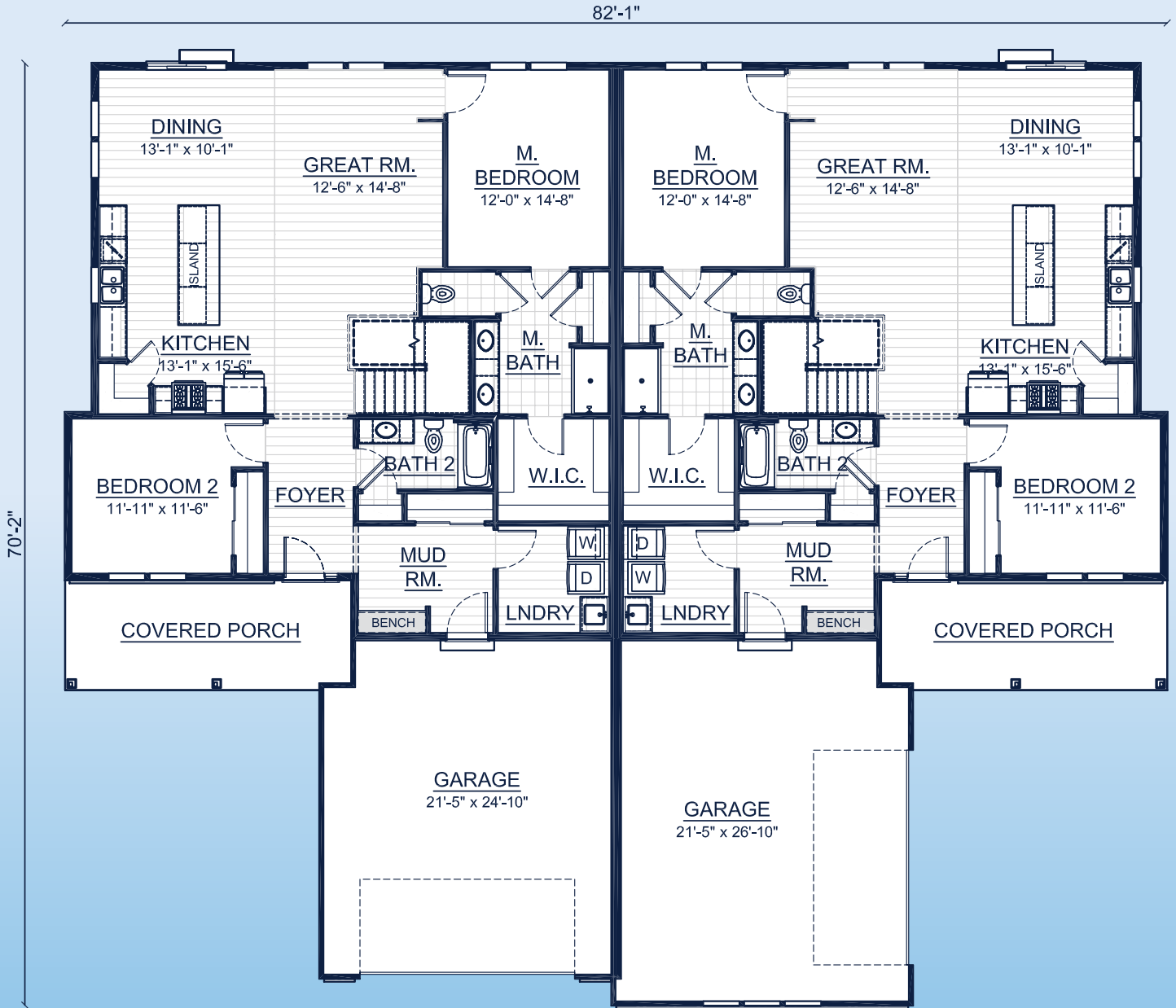
Call **262-725-1445** or email **[sales@steppingstonehomes.net](mailto:sales@steppingstonehomes.net)** [SteppingStoneHomes.net](http://SteppingStoneHomes.net)



**MILWAUKEE'S**  
Premier Home Builder

# THE JUNIPER

SF 1,613 SF 2 Bedrooms 2 Bathrooms 2 Car Garage



## FIRST FLOOR LAYOUT

SteppingStoneHomes.net

Stepping Stone Homes • 19435 W Capitol Dr, Suite 102 • Brookfield, WI 53045

© Copyright 2023 Stepping Stone Homes Inc. All Rights Reserved. Renderings are artist's conception only. Floor plan dimensions are approximate and may vary per elevation. Specifications, landscaping, features, options and pricing are subject to change without notice. Features shown may not be standard in plan, and are available at an additional cost. Some optional features may or may not be shown.

