

TRADITIONAL

THE JULIA

SF

2,502 SF



4 Bedrooms



3.5 Baths



2 Car Garage



The Julia has all the space you need with details such as a 2-story foyer, flex room with the ability to create a home office, a large great room with fireplace, an open kitchen/dinette with island and corner pantry, and a mud room with closet to keep you organized. Upstairs has a loft area open to the foyer, main bath, three bedrooms, including an Owner's Suite with large walk-in closet and a private bath. A second-floor laundry rounds out the convenience of this spacious home.



FARMHOUSE



CRAFTSMAN

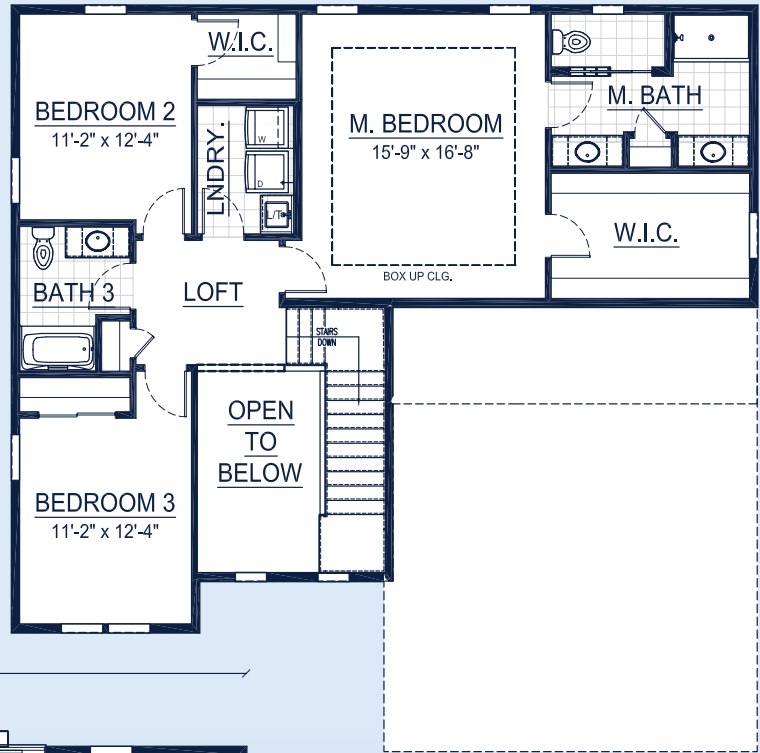
Call **262-725-1445** or email **sales@steppingstonehomes.net** SteppingStoneHomes.net



MILWAUKEE'S
Premier Home Builder

THE JULIA

SF 2,502 SF 4 Bedrooms 3.5 Bathrooms 2 Car Garage



FIRST & SECOND FLOOR LAYOUT

SteppingStoneHomes.net

Stepping Stone Homes • 19435 W Capitol Dr, Suite 102 • Brookfield, WI 53045

© Copyright 2023 Stepping Stone Homes Inc. All Rights Reserved. Renderings are artist's conception only. Floor plan dimensions are approximate and may vary per elevation. Specifications, landscaping, features, options and pricing are subject to change without notice. Features shown may not be standard in plan, and are available at an additional cost. Some optional features may or may not be shown.

