

THE ISABELLA

SF

2,643 SF



4 Bedrooms



2.5 Baths



2 Car Garage



This two-story Isabella has all the space you need with details such as a flex room with the ability to create a home office, a huge family room with a fireplace, an open kitchen/dinette with island and walk-in pantry, and a family mudroom to keep you organized with a large closet, drop zone and boot bench. Upstairs has a main bath, four bedrooms, including an Owner's Suite with walk-in closet and a private bath. A second-floor laundry rounds out the convenience of this spacious home.



ELEVATION B



ELEVATION A

Call **262-725-1445** or email **sales@steppingstonehomes.net** SteppingStoneHomes.net

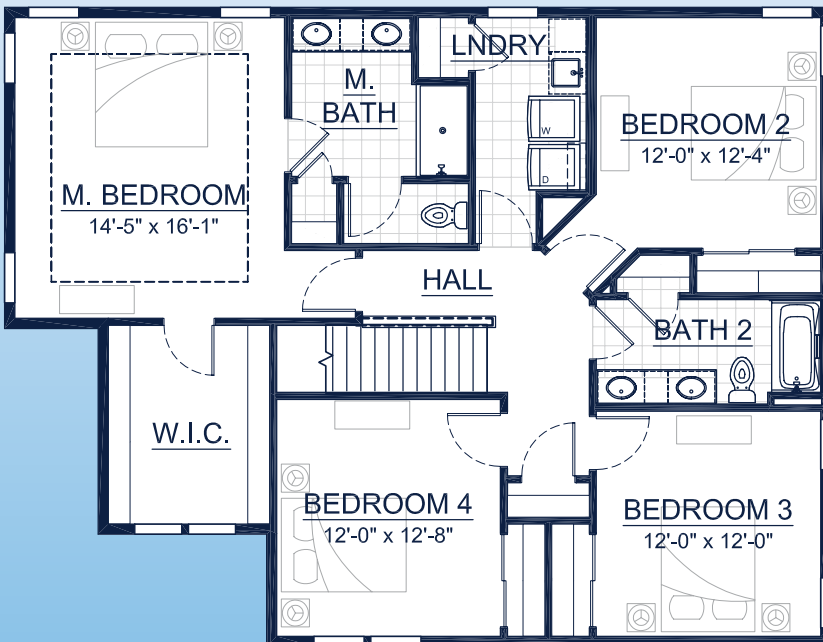
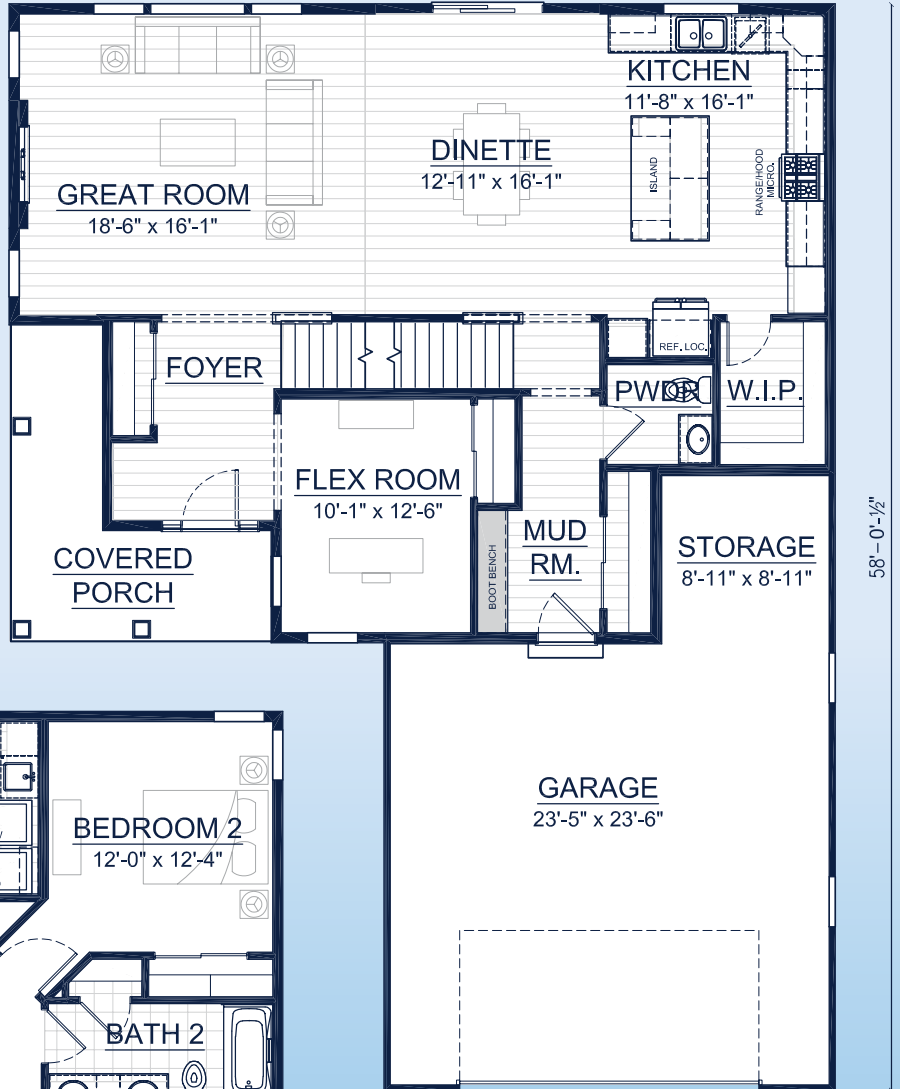


MILWAUKEE'S
Premier Home Builder

THE ISABELLA

SF 2,643 SF 4 Bedrooms 2.5 Bathrooms 2 Car Garage

44'-1"



FIRST & SECOND FLOOR LAYOUT

SteppingStoneHomes.net

Stepping Stone Homes • 19435 W Capitol Dr, Suite 102 • Brookfield, WI 53045

© Copyright 2023 Stepping Stone Homes Inc. All Rights Reserved. Renderings are artist's conception only. Floor plan dimensions are approximate and may vary per elevation. Specifications, landscaping, features, options and pricing are subject to change without notice. Features shown may not be standard in plan, and are available at an additional cost. Some optional features may or may not be shown.

