

THE GENEVA

SF

2,238 SF



4 Bedrooms



2.5 Baths



2 Car Garage



This two-story Geneva has all the space you need, including a flex room perfect for a home office, a spacious great room, and an open dinette and kitchen with island and large pantry. The mud room with storage and powder room are conveniently located off the garage. The second floor has a laundry room and a main bath with double vanity, 3 large bedrooms plus an Owner's Suite with two walk-in closets and private bath.



ELEVATION A



ELEVATION B

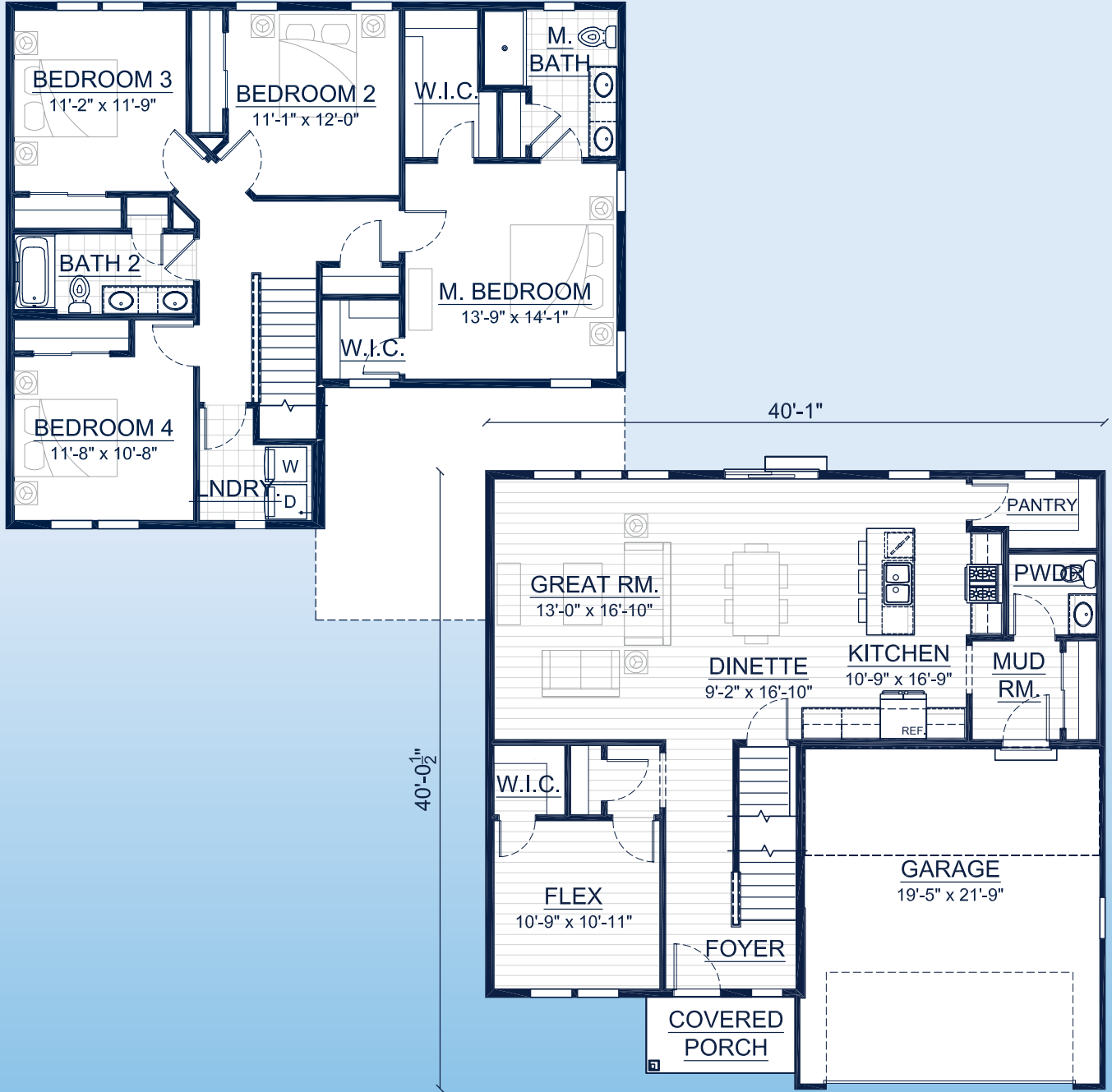
Call **262-725-1445** or email sales@steppingstonehomes.net SteppingStoneHomes.net



MILWAUKEE'S
Premier Home Builder

THE GENEVA

SF 2,238 SF 4 Bedrooms 2.5 Bathrooms 2 Car Garage



FIRST & SECOND FLOOR LAYOUT

SteppingStoneHomes.net

Stepping Stone Homes • 19435 W Capitol Dr, Suite 102 • Brookfield, WI 53045

© Copyright 2023 Stepping Stone Homes Inc. All Rights Reserved. Renderings are artist's conception only. Floor plan dimensions are approximate and may vary per elevation. Specifications, landscaping, features, options and pricing are subject to change without notice. Features shown may not be standard in plan, and are available at an additional cost. Some optional features may or may not be shown.

