

EDGEWOOD MEADOWS

CONDOMINIUM



Welcome to Edgewood Meadows.

This multi-family condominium comes with two floor plans to choose from and include all the comforts you want and more.

Both offer an open concept 2 bedroom, 2 full bathroom and 2 car garage unit with private access. The second floor units offer additional living space with an mezzanine overlooking the living room below and a den, perfect for home office or play room. The master bedroom has a spacious ensuite for added privacy. Enjoy your outdoor space on the patio or deck.



SF

1st Floor 1,324 SF
2nd Floor 1,828 SF



2 Bedrooms



2 Baths



2 Car Garage

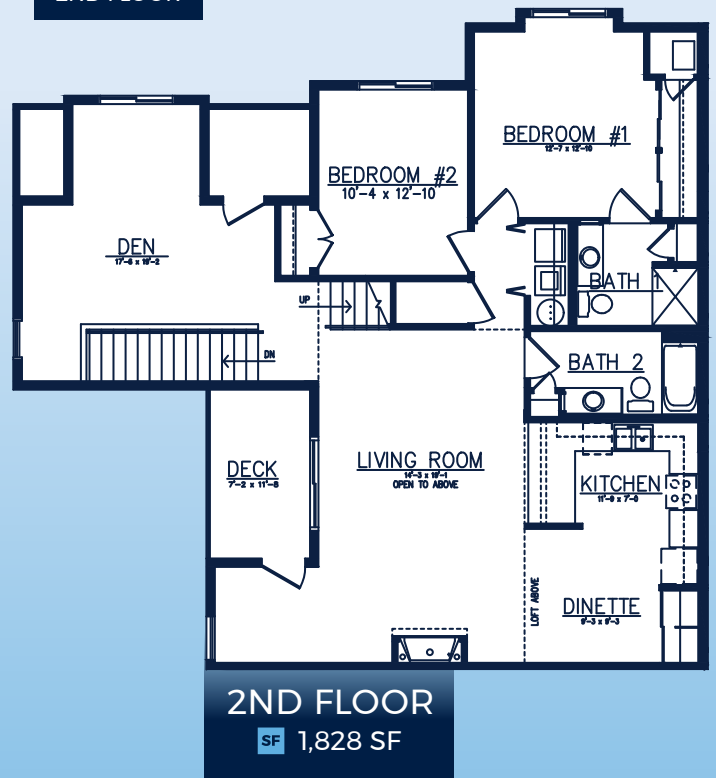
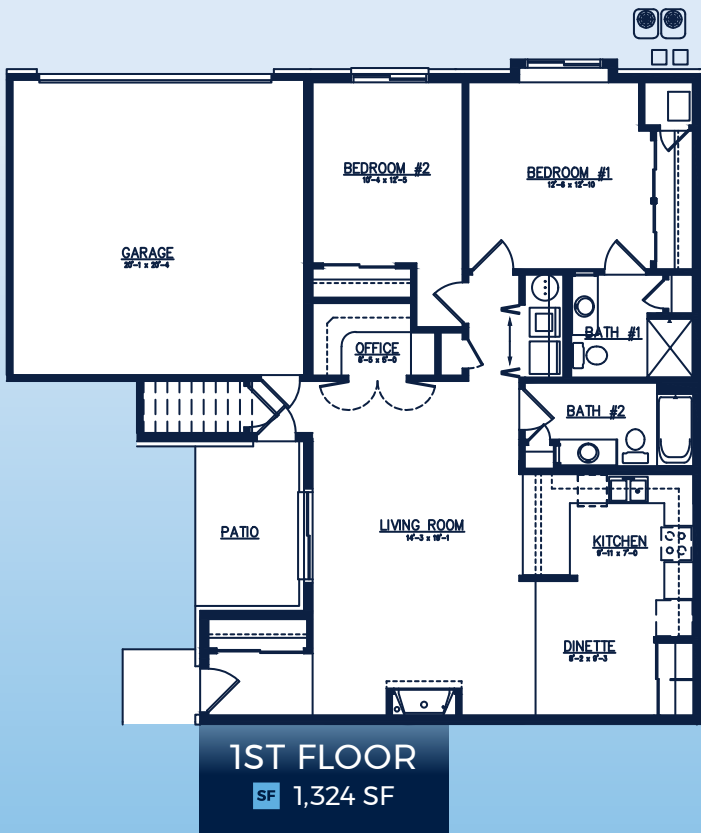
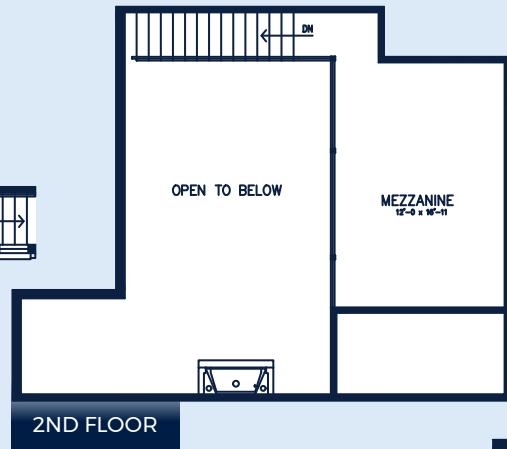
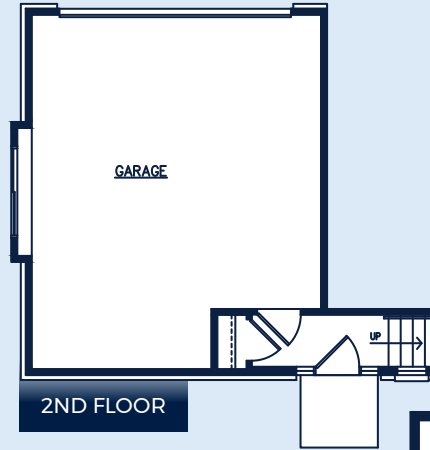
Call **262-725-1445** or email **sales@steppingstonehomes.net** SteppingStoneHomes.net



MILWAUKEE'S
Premier Home Builder

EDGEWOOD MEADOWS

2 Bedrooms 2 Bathrooms 2 Car Garage



FIRST & SECOND FLOOR LAYOUT

SteppingStoneHomes.net

Stepping Stone Homes • 19435 W Capitol Dr, Suite 102 • Brookfield, WI 53045

© Copyright 2023 Stepping Stone Homes Inc. All Rights Reserved. Renderings are artist's conception only. Floor plan dimensions are approximate and may vary per elevation. Specifications, landscaping, features, options and pricing are subject to change without notice. Features shown may not be standard in plan, and are available at an additional cost. Some optional features may or may not be shown.

