

THE DELAVAN

SF

1,820 SF



3 Bedrooms



2.5 Baths



2 Car Garage



The Delavan is a thoughtfully designed two-story that makes use of every inch. The first floor includes a connected kitchen, dinette, and great room. The Mud/Laundry room are off the garage for added convenience. In addition, you will find a flex room with access from the foyer and great room, a perfect spot for a home office or playroom. All the bedrooms can be found on the second floor and include a private Owner's Suite with walk-in-closet and double vanity bathroom. You will also find a loft for added living space.



ELEVATION A



ELEVATION C

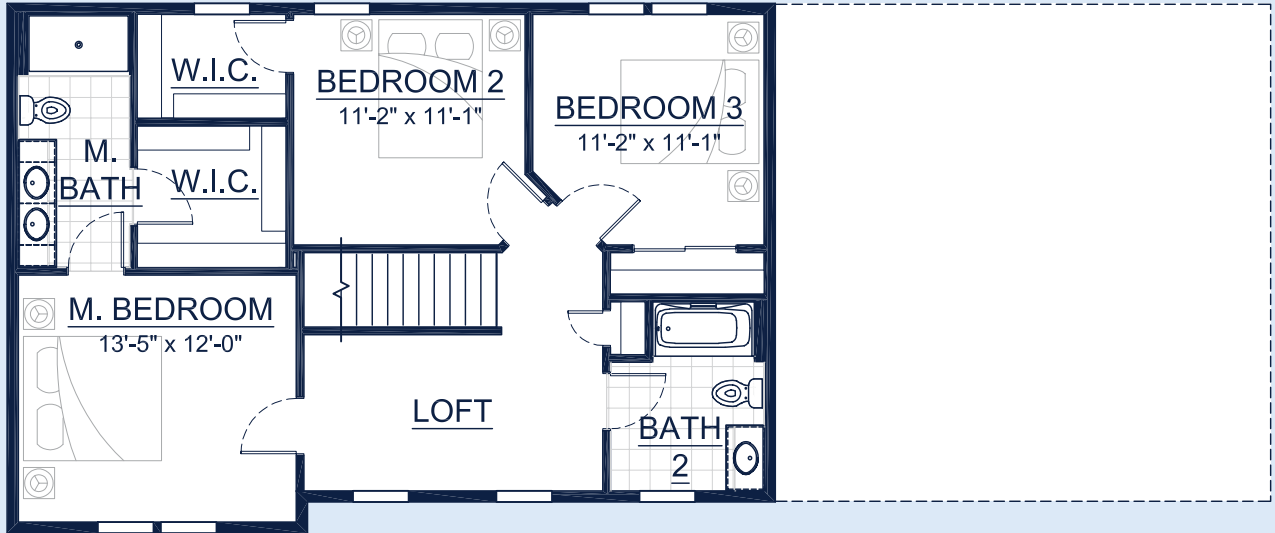
Call **262-725-1445** or email **sales@steppingstonehomes.net** SteppingStoneHomes.net



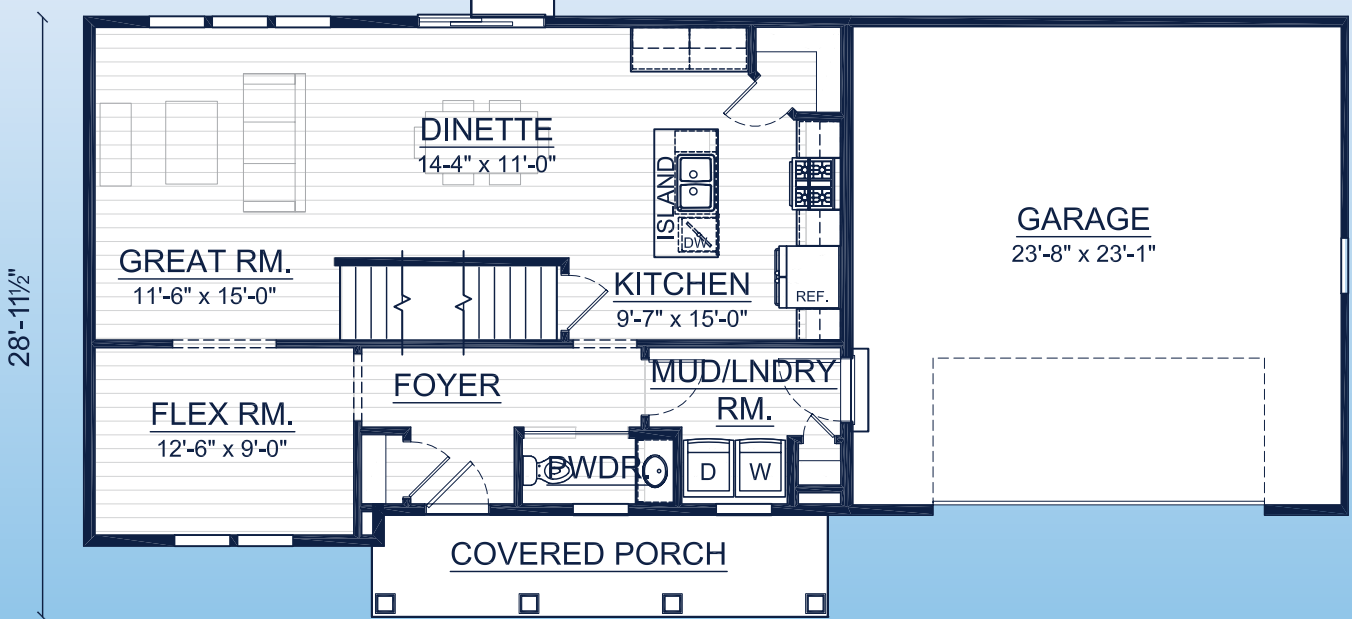
MILWAUKEE'S
Premier Home Builder

THE DELAVAN

SF 1,820 SF 3 Bedrooms 2.5 Bathrooms 2 Car Garage



60'-11½"



28'-11½"

GARAGE
23'-8" x 23'-1"

FIRST & SECOND FLOOR LAYOUT

SteppingStoneHomes.net

Stepping Stone Homes • 19435 W Capitol Dr, Suite 102 • Brookfield, WI 53045

© Copyright 2023 Stepping Stone Homes Inc. All Rights Reserved. Renderings are artist's conception only. Floor plan dimensions are approximate and may vary per elevation. Specifications, landscaping, features, options and pricing are subject to change without notice. Features shown may not be standard in plan, and are available at an additional cost. Some optional features may or may not be shown.

