

# THE AUBREY

SF

2,656 SF



4 Bedrooms



2.5 Baths



2 Car Garage



The Aubrey is a well-thought-out floor plan that has room for everyone in your family. Step through the front door under the covered porch that leads you into a spacious kitchen with island and large pantry, great room, and dinette area. The flex room in the front of the home is perfect for a playroom or home office. The first floor Owner's Suite comes complete with a full bathroom and walk-in-closet. Upstairs you will find a loft, 3 bedrooms and a full bathroom with double vanity.



CRAFTSMAN



TRADITIONAL

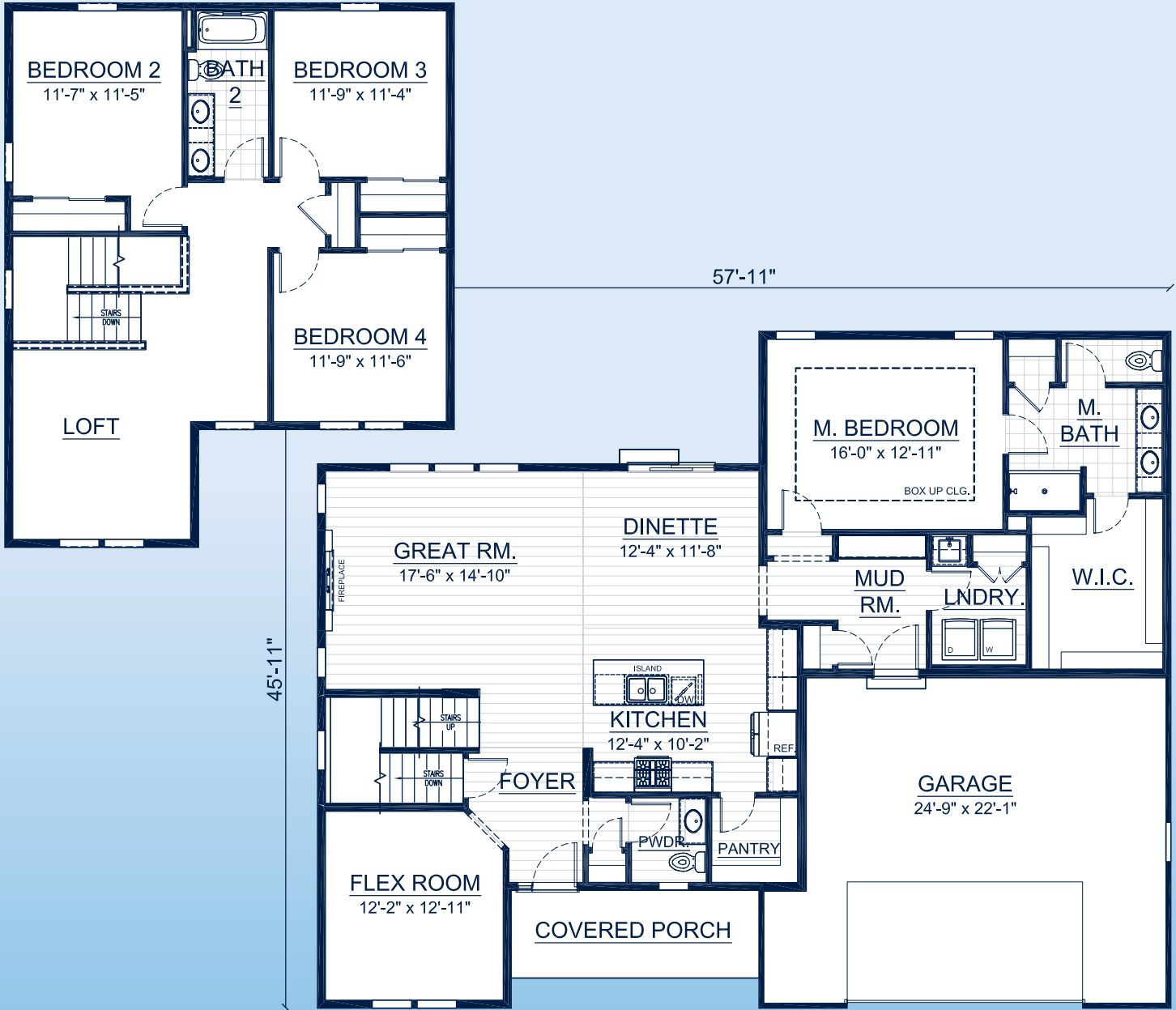
Call **262-725-1445** or email **[sales@steppingstonehomes.net](mailto:sales@steppingstonehomes.net)** [SteppingStoneHomes.net](http://SteppingStoneHomes.net)



**MILWAUKEE'S**  
Premier Home Builder

# THE AUBREY

SF 2,656 SF 4 Bedrooms 2.5 Bathrooms 2 Car Garage



## FIRST & SECOND FLOOR LAYOUT

SteppingStoneHomes.net

Stepping Stone Homes • 19435 W Capitol Dr, Suite 102 • Brookfield, WI 53045

© Copyright 2023 Stepping Stone Homes Inc. All Rights Reserved. Renderings are artist's conception only. Floor plan dimensions are approximate and may vary per elevation. Specifications, landscaping, features, options and pricing are subject to change without notice. Features shown may not be standard in plan, and are available at an additional cost. Some optional features may or may not be shown.

